

DELTA FUSE

Evolution



Field of application

- ✓ Welding fittings by Unidelta are used **for connecting polyethylene pipes for conveying gas** up to a pressure of 10 bar **or drinking water** up to a nominal pressure of 16 bar.
- ✓ Approved to EN 1555, EN 12201, EN ISO 15494, ISO 4437, ISO 4427.
- ✓ They **can be installed with PE80, PE100, PE100RC high density pipes** manufactured in accordance with the reference standards.
- ✓ Suitable for **FIRE FIGHTING SYSTEMS** and **INDUSTRIAL APPLICATIONS**.





DELTA FUSE *Evolution*

advantages



- ✓ Covered wire;
- ✓ PE 100 RC;
- ✓ Welding voltage 40 V;
- ✓ Suitable for drinking water convey (PN16) and gas convey (S5);
- ✓ Designed to be 100% safe also in extreme environmental conditions;
- ✓ PE100 virgin material;
- ✓ Resistant to a large number of chemical substances;
- ✓ Resistant to UV radiation;
- ✓ Each fitting is securely packed in a plastic bag.



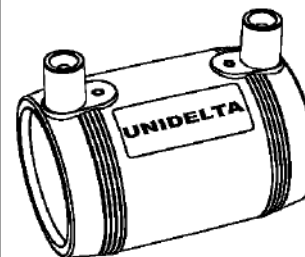
Pop Up
indicators

Pins
4,0mm





DELTA FUSE
MADE IN ITALY
UNIDELTA
 www.unidelta.com



Cod. 3001111000001

Des. COUPLER

Dim. 110 x 110

Qty: 1 piece

Mat. PE100 RC



EN 12201 – ISO 4427
EN 1555 – ISO 4437

Classif. SDR11 (W/P PN16 – GAS S5)

Pipe fusion range: SDR 7,4–17 Pins: 4,0mm Voltage: 40V

Fusion time	T(°C)	< 5	5 – 14	15 – 30	> 30	Cooling time > 10min
	Time	230s	219s	211s	193s	

With the time above set manually, disable the automatic time adjustment of the machine.

Batch 5022000031



UNIDELTA S.p.A. 25078 Vestone (BS) – Italy.
Quality System certified according to ISO 9001.

8 030884 050824

Label on the fitting

Fusion barcode

Batch number



d.180 - Diameter

40V - Voltage

540s - Fusion time

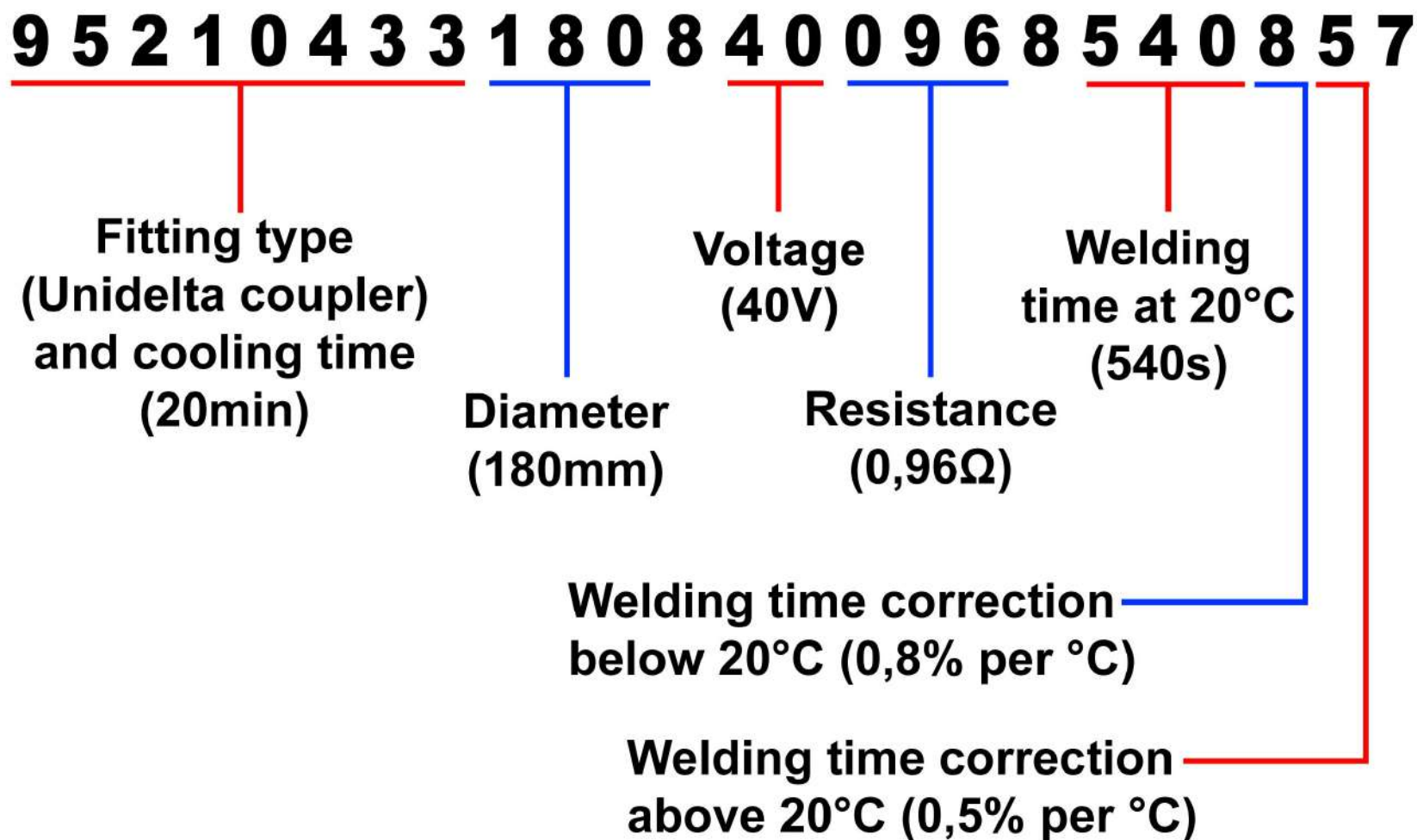
CT>20min - Cooling time

SDR7,4-17 - Compatibility

Traceability barcode

Field of usage

The fusion barcode



DeltaFuse Evo



Code 3001



Code 3002



Code 3003



Code 3004



Code 3005



Code 3006



Code 3007



Code 3206



Code 3216



the range

Transition fittings



Code 3626



Code 3636



Code 3630

New



Code 3676



Code 3646



Code 3656



Code 3666

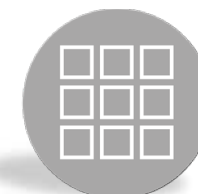


Code 3686



Code 3696

PN16 SDR11 S5
From D.20 to D.125mm



the range



Cod.3636



Cod.3626

Suitable for connection with electrofusion fitting
PN16 water / S5 Gas

Spigot fittings



Code 3806 PN16
Code 3804 PN10



Code 3810 PN16
Code 3809 PN10



Code 3811
PN16-PN10



Code 3145 PN16
Code 3155 PN10



Code 3148 PN16



Code 3141 PN16
Code 3151 PN10



Code 3140 PN16
Code 3150 PN10



Code 3142 PN16
Code 3152 PN10

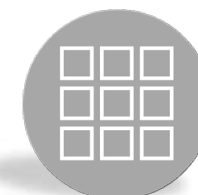


Code 3143 PN16
Code 3153 PN10



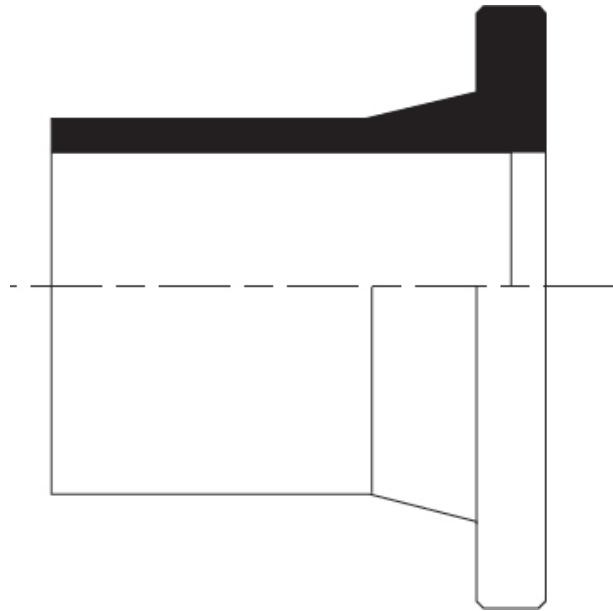
Code 3144 PN16
Code 3154 PN10

PN10 SDR17 S8 / PN16 SDR11 S5
From D.20 to D.315mm

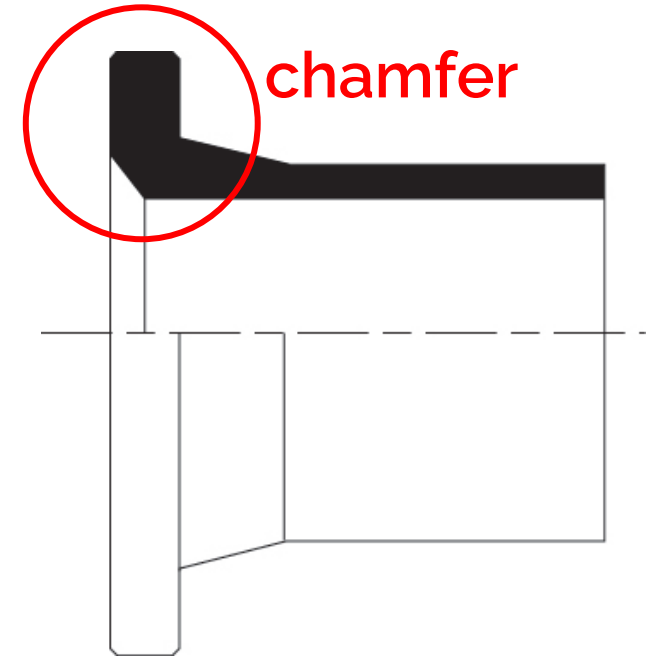


the range

Spigot fittings: the range...



**Standard Stub end
PN16/PN10**
Cod.3145/3155



**Special Stub end PN16 for
connection with butterfly valve**
Cod.3148

DELTA FUSE *Evolution*

approvals



BUREAU
VERITAS

EN 12201 / EN 1555 / ISO 4427
ISO 4437 / ISO 15494



In progress

kiwa 



DeltaFuse Evolution - Tutorial

YouTube "Unidelta SpA Official"

Electrofusion welding: tools



Code 3862 Easy



Code 3861 Pro



Code 385507



Code 385502



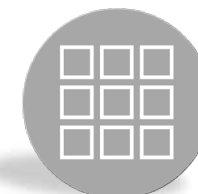
Code 3850



Code 3851



Code 3863



the range